



Sensors

IPS Vehicle Detection Sensors reliably detect the presence and absence of a vehicle in a parking space. The IPS sensor uniquely directs all sensing information to the IPS parking meter cellular communications backbone, saving customers the hassle of installing additional network equipment and dramatically reducing the cost of ownership. The IPS sensor uses multiple sensing technologies to detect vehicles. Its unique design provides the most accurate data on the sensor market and allows for quick installation and servicing.



Dome Mount

- Non-intrusive installation—sensor is integrated directly into the meter dome
- Easy access for maintenance and/or replacement
- Configuration for any parking environment
- Wireless connection to the IPS meter via cellular network—no additional infrastructure required

Pole Mount

- Non-intrusive installation—sensor is mounted on the meter pole
- Easy access for maintenance and/or replacement
- Wireless connection to the IPS meter via cellular network—no additional infrastructure required

In Ground

- In ground sensor contains both power source and antenna for a completely wireless solution
- Wireless connection to the IPS meter via cellular network—no additional infrastructure required

Sensor Types



Dome Mount



Pole Mount



In Ground

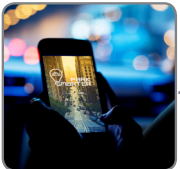


Benefits



- Sensor communicates directly to IPS meter rather than a network overlay, such as mesh communication network, providing the most reliable communication transmission available at a significantly lower cost
- Real-time occupancy data is available via web-based data feed, supporting maps and smartphone applications
- Sensor recognizes car movement to prevent piggybacking and parking violations
- Cost-effective option to implement demand-based pricing strategies

Integration



- When paired with the IPS meter, sensors can seamlessly integrate with third-party applications such as mobile payments, enforcement, and parking guidance
- IPS back office system serves as a common data repository

Installation



- **Dome Mount:** Simply remove the existing Dome and replace with the new dome mounted sensor (requires M5 meters)
- **Pole Mount:** Attach the provided U-bolts and back plate to the pole. point backing plate towards the corresponding parking space and tighten the bolts
- **In Ground:** Can be done in coordination between City and IPS staff. For best performance, sensors are installed below-ground, typically 2-3 inches below the surface. For the most accurate results, sensors should be installed under the area where the metallic bulk of the car typically rests

For more information about dynamic parking solutions from IPS Group, please contact your sales representative by calling **1 877 630 6638** or visiting IPSGroup.com